

# L.P.G.

<b>BASIC L.P.G. SYSTEM</b> .....	7-2
<b>GAS RACK</b>	
Cylinder (Bottle) Rod Removal and Replacement .....	7-2
Copper Tube Flaring .....	7-2
<b>L.P.G. SYSTEM</b>	
Pressure Check .....	7-3
Regulator Removal and Replacement .....	7-3
Low Pressure Gauge .....	7-3
<b>L.P.G. SYSTEM FITTINGS</b> .....	7-4

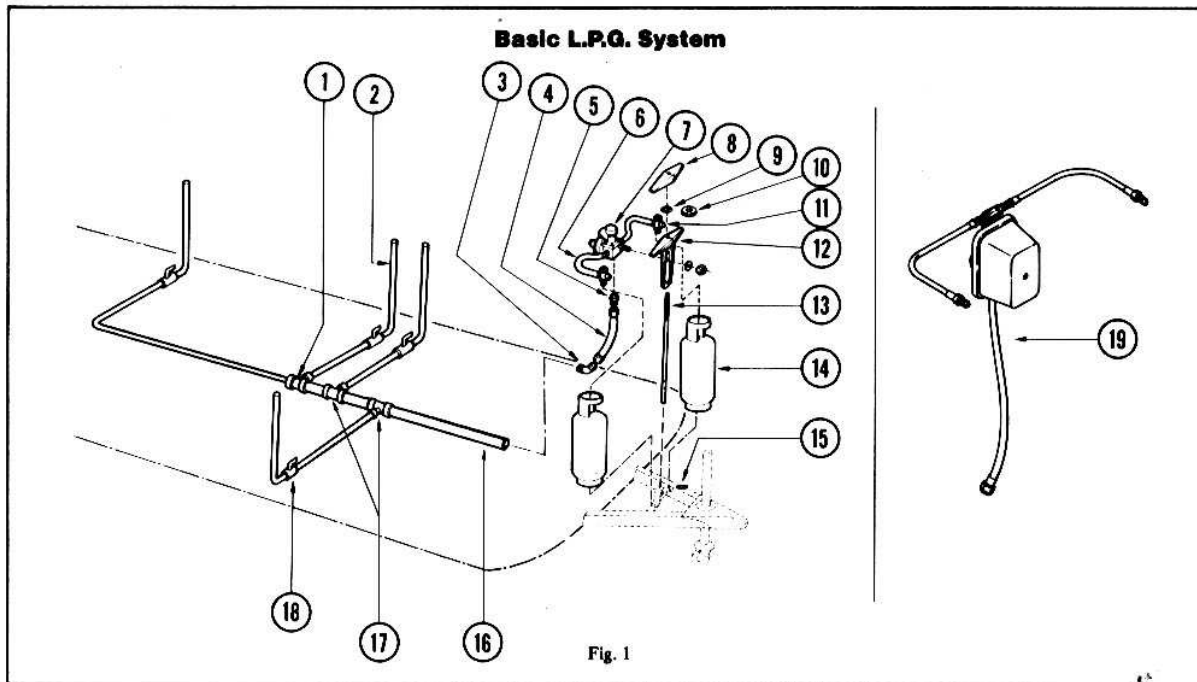


Fig. 1

No.	Part No.	Description
1	600003	Tee, 3/8" x 5/8" x 3/8"
2	600008	Tubing, copper 3/8" O.D.
3	600082	Elbow union
4	600158	Flexible connector - 24" (Excella)
	600157	Flexible connector - 29" (Excella)
5	600468	Adapter, 5/8 FP x 5/8 FP (Excella)
6	600167	Flexible connector - high pressure 20" (U.S.A.) (Excella)
	600128	Flexible connector - high pressure 24" (C.S.A.) (Excella)
7	600009	Regulator, gas-automatic (Excella)
8	410238	Handle
9	201335	Nylon washer
10	600726	Shut off valve handle
11	—	L.P.G. tank valve assemblies
	600727	Used with 20 & 28 lb. gas bottle
	600728	Used with 30 lb. gas bottle
	600729	Used with 30 lb. gas bottle w/c level
	600730	Used with 40 lb. gas bottle w/c level
	600731	Used with 30 lb. gas bottle w/c level & remote sending
	600732	Used with 40 lb. gas bottle w/c level & remote sending
	600733	Used with 30 lb. gas bottle w/ remote sending
	600734	Used with 40 lb. gas bottle w/ remote sending
	600735	10% shut off valve
12	101796	Bracket, hold down, gas bottle
13	400292	Rod - 30 1/2"
	400293	Rod - 36"
14	600077	L.P.G. gas bottle, 7 gallon
	600102	L.P.G. gas bottle, 7.5 gallon (optional)
	600344	L.P.G. gas bottle, 11 gallon w/gauges (optional)
15	310020	Pin rod - 3/16" x 1 1/2"
16	600004	Tubing, copper 5/8" O.D.
17	600000	Tee, 3/8" x 5/8" x 5/8"
18	600012	Shut off valve
19	600925	Regulator assembly, gas - automatic (C.S.A.) (Airstream)
	600926	Regulator assembly, gas - automatic (U.S.A.) (Airstream)
	600985	Regulator assembly, gas - manual (C.S.A.) (Airstream)
	600984	Regulator assembly, gas - manual (U.S.A.) (Airstream)

## Gas Cylinder (Bottle) Rod Removal and Replacement

1. Close gas cylinder valves.
2. Remove pigtails (Item No. 6 ) from gas cylinder valves (left handle threads).
3. Remove handle (Item No. 8 ).
4. Remove cylinder.
5. Pull regulator, regulator mounting base and flexible connector upward and lay to one side.
6. Using a 3/16" drift punch, drive pin (Item No.15) rearwards to allow rod to be removed (a heavy bar or hammer held against ring above pin on rear will lessen amount of drive force needed).
7. Replace by reversing above procedure. On L.Y. and Int'l. models be sure to properly position spacer block on rod about mid-way between top and bottom of the tanks.
8. Check for gas leaks.

## Copper Tube Flaring

1. Tools required.
  - a. Tubing cutter.
  - b. Flaring tool.
  - c. Close cutting tube cutter for cutting lines as close as 3/4" to wall or furniture.
2. After cutting tubing to proper length, use reamer (mounted on tubing cutter tool) to ream inside of tubing until smooth to insure a clean flare.
3. Put flare nut on tubing.
4. Insert tubing in proper size opening of flaring tool as stamped on clamping mandrel. Allow tubing to extend only 1/32" above mandrel. (If higher, flare will be too wide and bind on nut.) Fit tape mandrel over clamping mandrel and slowly tighten as far as possible.
5. Relieve pressure and remove tape mandrel. Open clamp and remove. Inside and outside of flare should be clean and smooth.

Soldered fittings are not permitted on L.P. gas and should never be used. Use flare fittings only.

## L.P.G. System Pressure Check

Use a pressure gauge (Fisher, see Fig. No. 2).

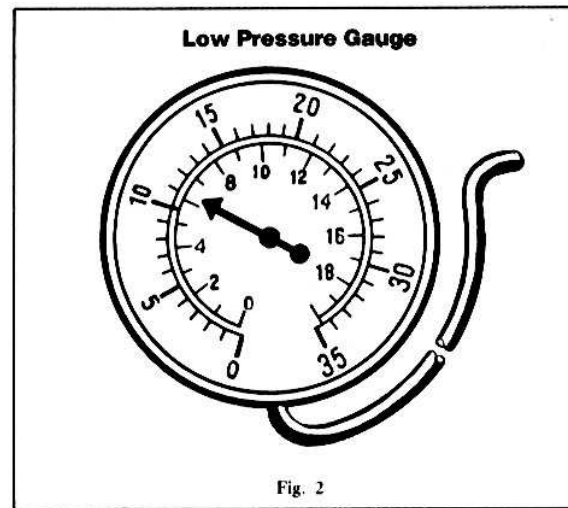
This gauge is calibrated to read in "inches of water column pressure." It is a standard manometer reading and is colored red.

Take the test reading at one of the range burners.

1. Remove the burner assembly from the burner valve.
2. Insert the gauge hose onto the burner valve and turn valve on.
3. Turn on and light another burner.
4. Test reading should be a minimum of  $11 \pm$  one inch of water column pressure. All appliances are made to operate at this pressure. If you do not get a correct reading then you must adjust the regulator. See Step 5 under Automatic Regulator Details.
5. Shut off the burner. The pressure gauge should not go over two inches above the original reading. If it does go above two inches, this indicates a faulty regulator or plugged orifice.
6. After any pressure adjustments, shut off burner valve and remove tube from burner to allow pressure to bleed off. Then reinstall and check again as in step 2.

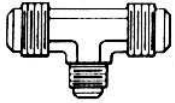
## Gas Regulator Removal and Replacement

1. Close valves on both gas cylinders.
2. Disconnect pigtails (Item No. 11) from gas regulator (Item No. 4).
3. Loosen flexible connector (Item No. 5) from bottom of gas regulator.
4. Remove 2 cap screws from cylinder hold-down bracket (Item No. 1).
5. Remove regulator.
6. Remove fitting (Item No. 8) from bottom of regulator.
7. Install No. 8 fitting in new regulator using teflon tape on threads.
8. Install new regulator on cylinder. Replace hold-down bracket (Item No. 1) with 2 cap screws.



9. Open valve of cylinders slightly to allow gas to blow out any possible dirt or foreign matter before reconnecting pigtails to new regulator.
10. Connect flexible line to bottom of new gas regulator.
11. Check for gas leaks.

## L.P.G. System Fittings



Flare tube tee

600000 - 3/8 x 5/8 x 5/8  
600003 - 3/8 x 5/8 x 3/8  
600281 - 5/8 x 5/8 x 3/8



Flare tube nut

600010 - 3/8 short  
600098 - 3/8 inverted flare



Flare tube nut

600001 - 5/8  
600010 - 3/8  
600036 - 1/2  
600098 - inverted flare



Close nipple

600293 - 1/2 close



Hexagon nipple



Flare union

600238 - 3/8 x 3/8  
600468 - 5/8 x 5/8



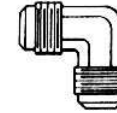
Adapter

600364 - 1/2 x 1/2  
600365 - 5/8 x 1/2



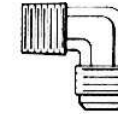
Adapter elbow

600096 - 5/8 x 1/2



Elbow

600049 - 3/8 NPT 3/8 flare



Flare elbow male

600048 - 5/8 x 1/2  
600051 - 3/8 x 1/4  
600082 - 5/8 x 5/8  
600201 - 3/8 x 5/8



Shut off valve

600012



Adel clamp

340002